





Words from a former resident:

"Before moving to The House of Grace I felt so empty and lost. I was trying to make life good but it wasn't working. Everything about my life has changed since moving to The House of Grace. There is meaning to life now. I've been shown how life should be lived, and how I treat myself and others has become really important to me. My baby now has a chance because I've been able to learn to love her."

WELCOME

Welcome to our 2023 Annual Report. Through this document we hope to give you some insight into the heart and workings of The House of Grace Trust.

We're a team with a passion to see young mums loved and supported through one of their most challenging and important seasons of life.

The House of Grace provides a safe place to live and the opportunity to learn life skills. The impact of what we provide runs deep. It benefits families, communities and generations to come.

Thank you to all who partner with us to help change young lives. You are our heroes!



CONTENTS

1. About us
2. How we work
3. Highlights
4. Organisational structure
5. Chairperson's review
6. Wellington home update
7. Hamilton home update
8. The impact
9. Personal stories
10. Treasurer's report
11. Thank you
12. Income and expenses summary

1. ABOUT US

The House of Grace Trust was established in December 2001 as a non-profit organisation. We are predominantly funded and supported by financial donations, grants, private sponsorship, fundraising activities and donated goods and services.

OUR VISION

For every young mum and baby to thrive and have hope for the future.

OUR MISSION

To support and equip young mums in a whānau filled with love and grace.

WHĀNAU

We value family and community connections.

FAITH

We believe God created us all with great plans and purpose.

MANAAKITANGA

We come alongside, encourage and support every young person.

GROWTH

We facilitate learning and development with a future focus.

OUR VALUES

PROTECTION

Our homes are physically & emotionally safe.



2. HOW WE WORK

The House of Grace homes function as large family homes, with a 'house family' who lives onsite. Each can accommodate up to five pregnant teens or young mums and babies. It's like a big family - everyone cooking and eating together, sharing the household duties, learning and having fun.

Daily life can include attending the local teen parent school, continuing to work, study or focus on parenting skills and establishing new routines.

Residents participate in antenatal classes, parenting courses, first aid training and other self-development. This depends on each individual's stage of pregnancy, level of education, goals and opportunities available at the time.

The majority of learning in the home comes from hands-on experience. Menu planning, budgeting, cooking, regular routines with self-care, laundry and housework. Everyone works together to support one another.

OUR OBJECTIVES

Provide a positive & empowering experience for residents.

Ensure ongoing financial stability of the Trust.

Provide a healthy team experience for staff & volunteers.

Ensure facilities are safe and fit for purpose.

Create a culturally safe environment.

Ensure the Trust is operating at a high level of professionalism.



3. HIGHLIGHTS

- Residents successfully engaging in education after the birth of their babies and making positive choices for their futures.
- The Rikihana family (Wellington Houseparents) welcomed the birth of their third child.
- Successfully trialed a new billeting model with residents for 2 months.
- Produced a short video with beautiful sharing from former residents about how The House of Grace has impacted their lives. Scan the QR code to view.
- A hugely successful fundraising dinner in Wellington.
- New bathroom renovations completed in Wellington.
- New bathroom facilities installed in the Hamilton home.
- More mums and babies have been able to stay safe and together – where separation through social services had been a real possibility.
- Purchase of lovely new dining chairs in both homes – solid and safe!
- We received donations of vegetable seedlings and fruit trees from Bunnings and Western Community Centre.
- Working bees from local churches and community groups in both homes.



4. ORGANISATIONAL STRUCTURE

Board of Trustees

Provide strategic direction and advice on major funding and policy decisions.

Chairperson: Treena van Rijssel

Secretary: Jaci Ford

Treasurer: Craig Ell

Trustee: Natalie Joyce

Trustee: Wayne Collins

Director

Focused on general management, growth and ongoing health of the organisation. Responsible for staff recruitment, training, overseeing policy and strategic funding decisions.

Accounts Manager

Responsible for accounts receivable/payable and tactical fundraising activities.

Office Manager

Management of office, administration support to the team, external communications and securing grants for operational costs.

Area Supervisor(s)

Resident intake, volunteer recruitment and training. Houseparent support and developing relationships with community stakeholders.

Houseparents

As live-in volunteers, houseparents co-ordinate the day-to-day running of the home. Provide support and teaching to residents, including parenting skills and household management.

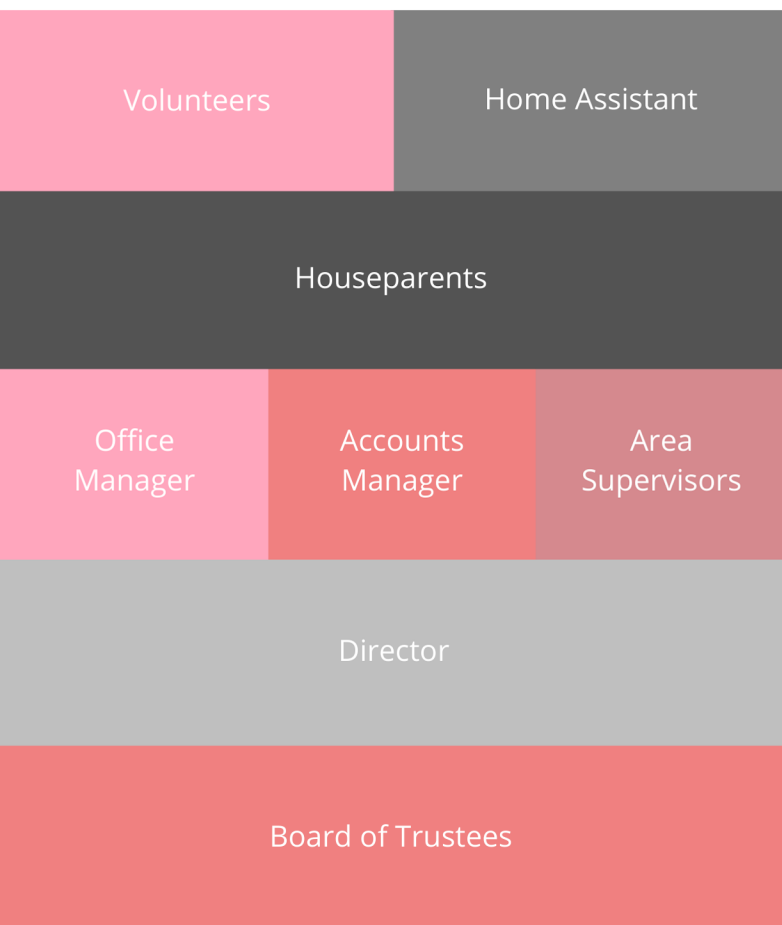
Home Assistant(s)

Provides practical support to the running of the home through cleaning, childcare, resident room set up, meal preparation, resident support and donation sorting.

Volunteers

Provide relief and support to houseparents on a regular basis. Includes weekend relief, resident support, donations management and property maintenance.

Note: All paid staff work part time, totaling 3.4 full-time equivalent.



5. CHAIRPERSON'S REVIEW

Over the last year The House of Grace has welcomed many young mums to be, and mums with babies into our homes.

We've seen transformations happen before our eyes. This happens due to the residents having a safe place to live, learn, play, and be loved. We have also seen the transformation of former residents, as they continue to grow in their parenting and live life in the community.

I'm always so grateful for our amazing team made up of volunteers and staff. I see such dedication and heart as they serve in the ministry to help, teach, support and cheer on each resident that comes into our homes.

I'm also grateful to the wonderful people who supported our fundraising dinner this year. It was an incredible success due to the generosity of all who attended.

In recent years, funding has been harder to find but the financial support of companies and individuals has been amazing. Your support makes a big difference in our operations. Thank you to all the funders who support the vision and to all the donors and volunteers who make what we do possible.

Each year we look forward with anticipation to the new residents who will come into the homes and the new relationships that will be built. With a dedicated team that has a focus on making a difference in people's lives, I can't wait to share with you the life changing testimonies to come.

Treena van Rijssel, Chairperson



6. WELLINGTON HOME UPDATE

The Wellington home has gone from strength to strength. This year we had the opportunity to trial a billeting model of resident care. The Rikihana's (our Wellington houseparents) gave birth to their third child, so we closed the home for two months to give them time to prepare and then settle in as a family of five.

During this time, our existing residents moved in with a billet family, which was an exciting first for The House of Grace. Both girls were well supported by an amazing family and regular visits from myself. It was great to see the girls connect with another family and extend their network of support. Even after moving back to the Wellington home, the girls remained in contact with their billet family and enjoy the memories of the time they spent with them.

Another highlight was witnessing one of our residents working hard to achieve her NCEA levels. "You will see me somewhere, someday, doing something big!" she beams.

"Being here helped me think of goals and to go further than I would have otherwise. My favourite part is that I feel part of the family."

This sense of family always has such a powerful impact on our residents. They start to believe that they are worthy of love and respect, which grows their self-worth and influences the way they treat others.

We also feel privileged to still be involved in the lives of many of our past residents. Supporting them as they choose a different way of life for their children to what they experienced growing up. We love to cheer them on, knowing future generations are being positively impacted. As one of our residents said "My baby now has a chance."

Rahel Williams,
Wellington Area Supervisor



7. HAMILTON HOME UPDATE

We've been blessed with some amazing mums and babies in Hamilton.

One resident even returned for the second time! She must've felt that The House of Grace is a safe place for her and wanted that security and support back in her life. The Houseparent's were able to strengthen their relationship with her and support her in such a difficult time of her life. She commented she always felt like she could talk to the Housemum and the Housemum always made time to listen to her.

Residents have enjoyed family activities including trips to Kelly Tarltons, the Baby Expo, Bullswool Farm and going to the movies. It's encouraging to see special memories being made and relationships being built.

We've celebrated impending baby arrivals with a baby shower and invited extended whānau too. A local photographer also volunteered her time to do a special maternity shoot with a hapū mum.

Aftercare connections have remained strong as well. Our Houseparents helped a former resident move house and celebrated children's birthdays together. Former residents and friends also attended a special Mother's Day event at the house.

After more than two years of incredible service to young mums in the home, our current Houseparents, Danii & Jared are moving on to their next season of life.

We are so thankful to the Vercoe family and wish them all the very best for their next adventure.

Michelle Torckler,
Hamilton Area Supervisor



8. THE IMPACT

I'm often asked "What impact does The House of Grace have on those you serve and the wider community?"

The answer is not always a simple one. Lives are saved, families remain intact, education is facilitated, mums and babies are kept safe. These impacts have a ripple effect on communities that is not easy to measure.

What is the cost to a mother who terminates a pregnancy due to lack of support or a safe place to live? What is the cost to families who are separated due to safety concerns? What is the cost of a lifetime with no education or the cost of a parent who lacks the knowledge to care for their child?

The House of Grace exists to help solve these issues. We provide a home and support for young women experiencing an unexpected pregnancy. This gives space and time for each individual to carefully consider her future so she is not rushed into making a decision she may regret.

The House of Grace provides a safe place to be and facilitates connections with social services to enable a mum to keep herself and her baby safe.

The House of Grace encourages goal setting and supports each young mum to engage in education and work towards a positive future.

The House of Grace provides teaching and practice opportunities. Learning how to cook, clean and create healthy family routines so that babies grow up well-nourished and healthy.

The House of Grace provides a family environment and social support networks that can last a lifetime and benefit generations to come.

Thank you to our team and our supporters who together make an incredible difference in the lives of others.

Ngā mihi nui,

Fiona Collins, Director



9. PERSONAL STORIES

“Living at The House of Grace is teaching me heaps of life skills, like budgeting. I’m currently doing a parenting course which has helped me identify what kind of parent I am and what I can do to improve my parenting. I’m learning how to cook cheap meals that can go a long way (as in feed a lot of people) and also how to be super mindful of everyone around me. It’s really cool for young mums.”

We love hearing testimonies like this one. Each young girl is unique and has her own story to tell. Many have had difficult pasts and we’re often amazed by their maturity and resilience.

One of our recent residents came to us to escape nearby gangs and insecurity. She had grown up in and out of foster care with a childhood experience you don’t wish for any young person.

But to her credit, she wanted to make a fresh start. To learn parenting skills so she could be the best mum she could be. To surround herself with people and an environment that will be positive for her and her baby.

It’s a long journey ahead, but we are honored to help provide a safe home, a warm bed each night and a team of people who care.



10. TREASURER'S REPORT

Like many other charitable trusts, The House of Grace faces a continual challenge to provide the necessary funding required to provide a home, support, guidance, encouragement and services for young mothers, so they can gain the skills and confidence they need to be great Mums.

With the support of the local businesses, communities, individuals, foundations and benevolent organisations/Trusts etc. along with strong governance, we have not only managed to provide these services to hundreds of young mums and their babies over the last twenty or so years, but also pay off our debt, and maintain a strong asset base.

The support of these groups and individuals ensures our homes remain open to not just operate but thrive. Offering a warm, caring environment where mothers feel safe and part of a family and babies can also have the opportunity to thrive. We're so grateful for those who partner with us, whether as a volunteer, or by giving regular donations or bequests.

For the first time this year, we hosted a fund-raising dinner which was a real success. It not only allowed us to connect with many of our supporters, but it raised a considerable amount of funding, enabling us to plan for the future. A huge thank you to everyone who gave and attended.



This coming year could be a challenging one with some obvious head winds facing the New Zealand Economy, which may well affect Trusts like ourselves. However, what gives me confidence is the strong community relationships The House of Grace has developed over many many years, together with the trust and support of all our partners.

So, on behalf of the Board, I would like to extend my heartfelt thanks to all our volunteers and supporters in there many forms. Without you we couldn't provide the services and homes we do, to some of the most vulnerable in our communities. We look forward to partnering with you all this coming year as we continue to make a difference.

God Bless.

Craig Ell, Treasurer

11. THANK YOU

A huge thank you to every individual and organisation that has supported The House of Grace this year, including those who may have been inadvertently left off this list. We appreciate you all so much.

Funders

Common Good Foundation - COGS - Eastern & Central Community Trust - EM Parazyn Trust - FH Muter Charitable Trust - Four Winds Foundation - Gallagher Trust - Grassroots Trust - John Illot Charitable Trust - The Lion Foundation - Nikau Foundation - Norah Howell Charitable Trust - NZ Lotteries Grants Board - Page Trust - Pelorus Trust - Thomas George Macarthy Trust - Tidd Foundation - Trust House Foundation - Trust Waikato - Tui Flower Foundation - Vavasour Trust - The Wallis Trust - Wellington Children's Foundation - Wellington Community Fund - Wellington Methodist Charitable & Educational Endowments Trust - Winton & Margaret Bear Trust

Organisations

Bell Adapt Limited - Infoodle - Inner Wheel Wellington - Integrated Property Services Ltd - Jumble Tree - MARDAG Holdings - Marlborough Christian Aid Trust - Max Architecture - Rotary Club of Port Nicholson - Switch Your Spend - Voice for Life Waikato - Waikato Regional Council - Wellington City Council - Wellington Masonic Club

Churches

ARISE Church - Elim Church Wellington - Hamilton Central Baptist Church - Kings Church - Methodist Church of NZ - Newlands Baptist Church - Northern Hills Church - Onslow Community Church - Plimmerton Presbyterian Church - Reverence for Life Group - St Michaels Church Newlands - The Village Church - Wellington Reformed Church

Donated goods or services

Beanies For Babies - Bear & Moo - Bunnings - The Collective Hub Johnsonville - Dobbins Furniture - Good Bitches Baking - Jet Electrical Solutions - Kiwi Community Assistance - MediTrain First Aid - Milk Bar - Moana Road - Palmers Plimmerton - Queen Margaret College - Scots College - Silverstream Retreat - Southern Hospitality - The Invisible Company - The Nest Collective NZ - Tickadeeboo - Western Community Centre

The House of Grace Heroes

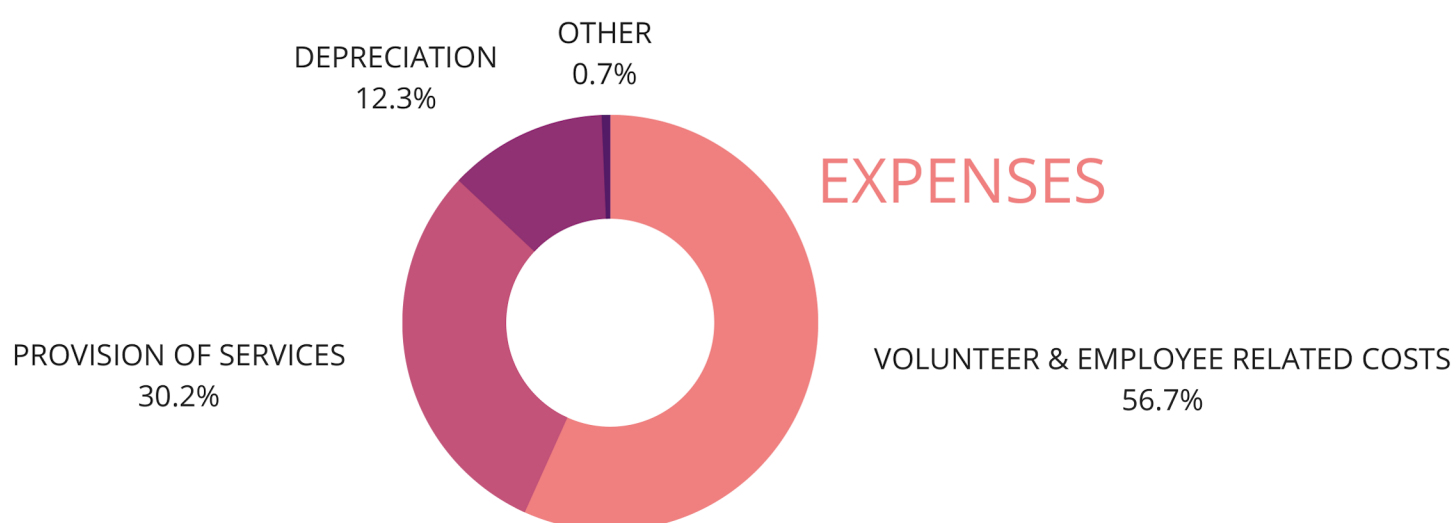
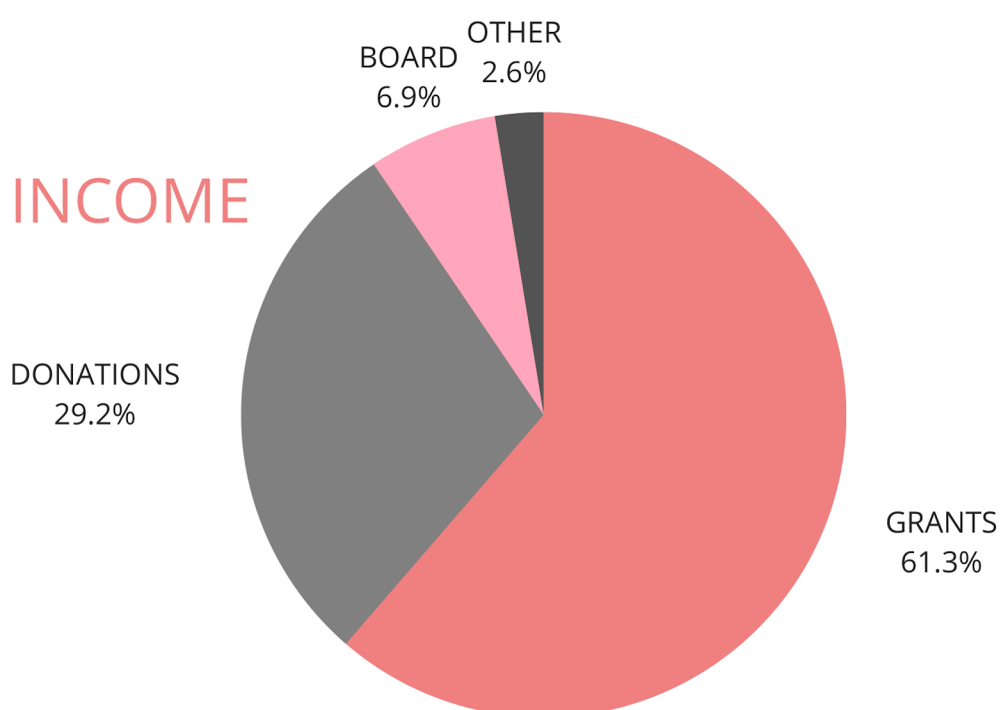
We are also particularly grateful to those who have personally given to The House of Grace through one-off donations or regular automatic payments. Lives are being changed through your generosity. You are our heroes.



12. INCOME AND EXPENSES SUMMARY

Our key income sources include grants, donations, accommodation board from residents and fundraising.

Here's a snapshot of our income and expenses performance for the year ending 31 March 2023. For full details, please refer to our financial statements which are available on request.



Legal Name of Entity

The House of Grace Trust Incorporated

Charities Registration Number

CC10642

Postal Address

PO Box 50033, Porirua 5240, New Zealand

Contact

04 920 5667

info@thehouseofgrace.org.nz

www.thehouseofgrace.org.nz

